



MONTHLY MEMBERSHIP PROGRESS REPORT

District 25 E

Results as of: 07/31/2018

GMT: STEVE ANTON

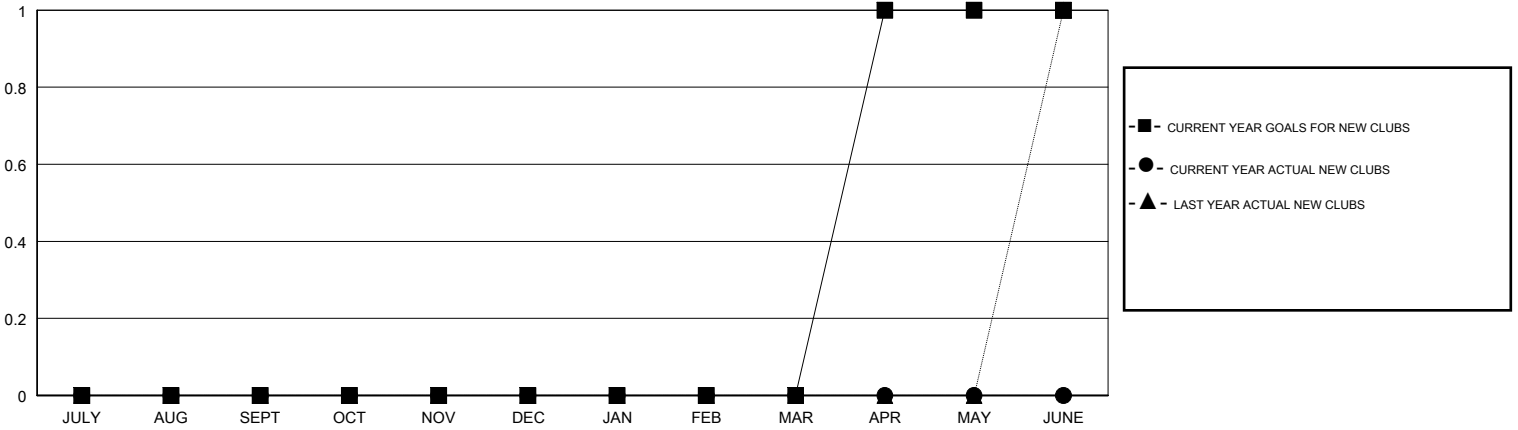
LOCATION INDIANA

GMT CA

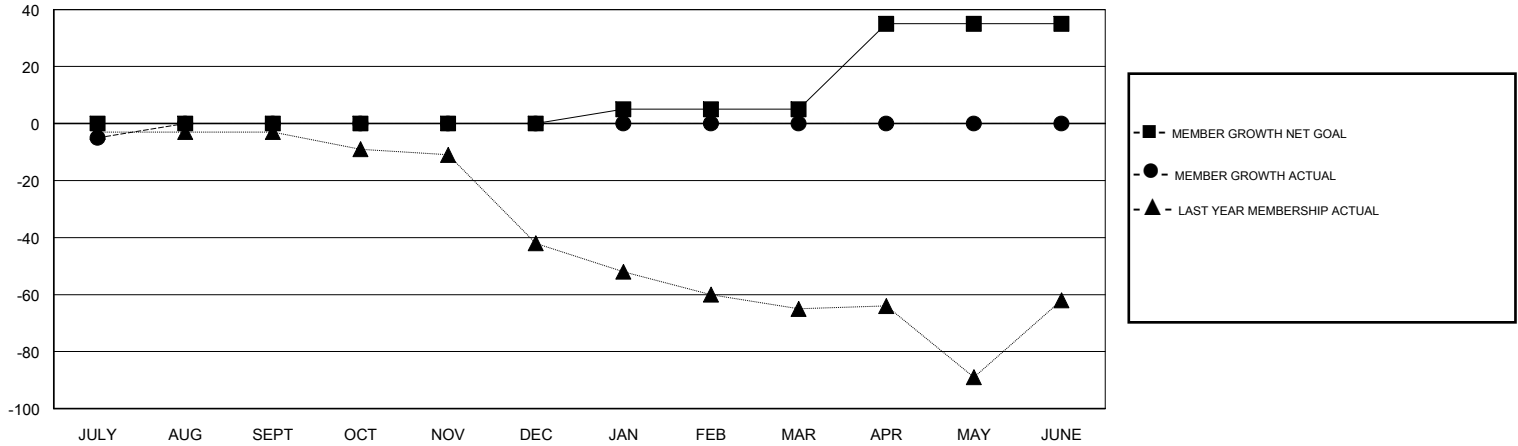
Clubs			
RESULTS FOR 2018-2019			
QUARTER	NEW CLUB GOAL	NEW CLUBS	DROPPED CLUBS
JULY/AUG/SEPT	0	0	0
OCT/NOV/DEC	0	0	0
JAN/FEB/MAR	0	0	0
APR/MAY/JUNE	1	0	0

Members			
RESULTS FOR 2018-2019			
QUARTER	MEMBER GROWTH NET GOAL	MEMBER GROWTH ACTUAL	DROPPED MEMBERS ACTUAL (including transfers)
JULY/AUG/SEPT	0	12	17
OCT/NOV/DEC	0	0	0
JAN/FEB/MAR	5	0	0
APR/MAY/JUNE	30	0	0

GOALS AND ACTUAL NEW CLUBS CUMULATIVE



GOALS AND ACTUAL MEMBERS CUMULATIVE



DROPPED CLUBS: 0	6 CLUBS OF 63 ADDED 1 OR MORE NEW MEMBERS	<u>GENDER DISTRIBUTION</u>
DROPPED MEMBERS	CLICK HERE FOR CUMULATIVE MEMBERSHIP DATA	MALE 932 (63.49%) FEMALE 536 (36.51%) Women Percentage Fiscal Year Goal: 40%
DECEASED 2		TOTAL FAMILY UNIT MEMBERS 529
CLUB CANCELLED 0		FAMILY MEMBERS PAYING HALF DUES 272
OTHER 15		
TOTAL 17		